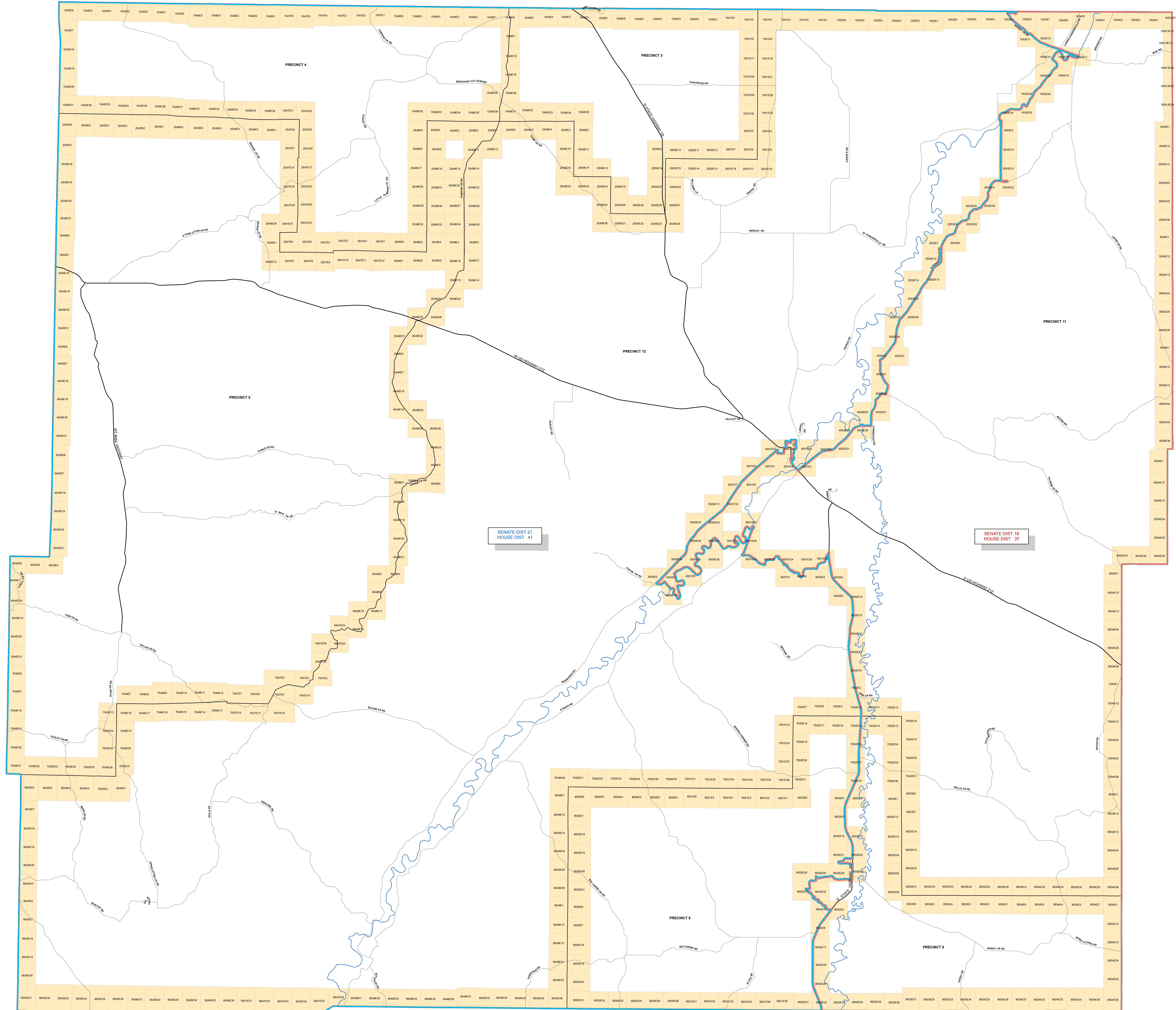


DISTRICT LINE LOCATIONS

- LEGEND**
- WEST DISTRICT
 - EAST DISTRICT
 - MAJOR RIVERS
 - COUNTY ROADS
 - PAVED ROADS
 - TRS



Map assembled and printed on July 8, 2014 by Joe Cathey. Not for survey purposes. This map was created to help show where precinct, district and senate boundaries are in Powell River County after the 2013 redistricting changes by the State of Montana.

Coordinate System: NAD 1983 UTM Zone 12N
 Projection: Transverse Mercator
 Datum: North American 1983
 false easting: 500,000.0000
 false northing: 0.0000
 central meridian: -105.0000
 scale factor: 0.9999
 latitude of origin: 0.0000
 Units: Meter

